

Credit Unions (2014)

In Philadelphia and the three surrounding Pennsylvania counties (Bucks, Montgomery, Delaware), there are approximately **107 credit unions, with 290 branch offices. Five of these are community development credit unions** with a mission of serving low- and moderate-income people and communities

We compiled data in 2014 on 82 (77%) of these credit unions. We found:

- Credit union members: 801,461
- Employees: 2,312 (1,866 full-time; 446 part-time)
- Employee Compensation: \$146 million
- Total value of liabilities, shares, & equity: \$16 billion
- Total Income: \$380 million
- Total Net Income (minus expenses): \$93 million

- Around 30% of credit unions have a majority of members and/or management officials who are Black American, Hispanic American, or Asian American

Housing Cooperatives

In Philadelphia and the three surrounding Pennsylvania counties (Bucks, Montgomery, Delaware), there are **over 16 housing cooperatives**. In our 2015 study of **only four (25%)** of these, we found:

- Average years since established: 46 years ago
- Number of individual members: 194
- Number of residents: over 540
- Employees: 30 (13 full-time; 17 part-time)
- Employee compensation: \$1.34 million
- Annual revenue: over \$300,000

Food Cooperatives

In Philadelphia and the three surrounding Pennsylvania counties (Bucks, Montgomery, Delaware), there are **7 established food cooperatives and 6 start-ups**. In our 2015 study of **10** of these, we found:

- Coop members: 11,579
- Employees: 231 (148 full-time; 83 part-time)
- Average number of volunteers per month: 636
- Employee Compensation: \$5.5 million
- Total annual revenue: \$32.5 million

Worker Cooperatives

In Philadelphia and the three surrounding Pennsylvania counties (Bucks, Montgomery, Delaware), there are **6 worker cooperatives**. In 2015, we surveyed **3 of these**, including the two largest and most established. We find:

- Average years since established: 18 years ago
- Coop members: 83
- Employees: 285 (268 full-time; 17 part-time)
- Employee compensation: \$7.25 million
- Annual revenue: \$8.4 million
- Total Assets: \$2.37 million

Preschool and School Cooperatives

In Philadelphia and the three surrounding Pennsylvania counties (Bucks, Montgomery, Delaware), there are **7 preschool and school cooperatives**, plus **5 additional nurseries** that are cooperatively run but not technically coops because they are not legally owned by members. In 2015, we surveyed **6** of these 12 schools. We found:

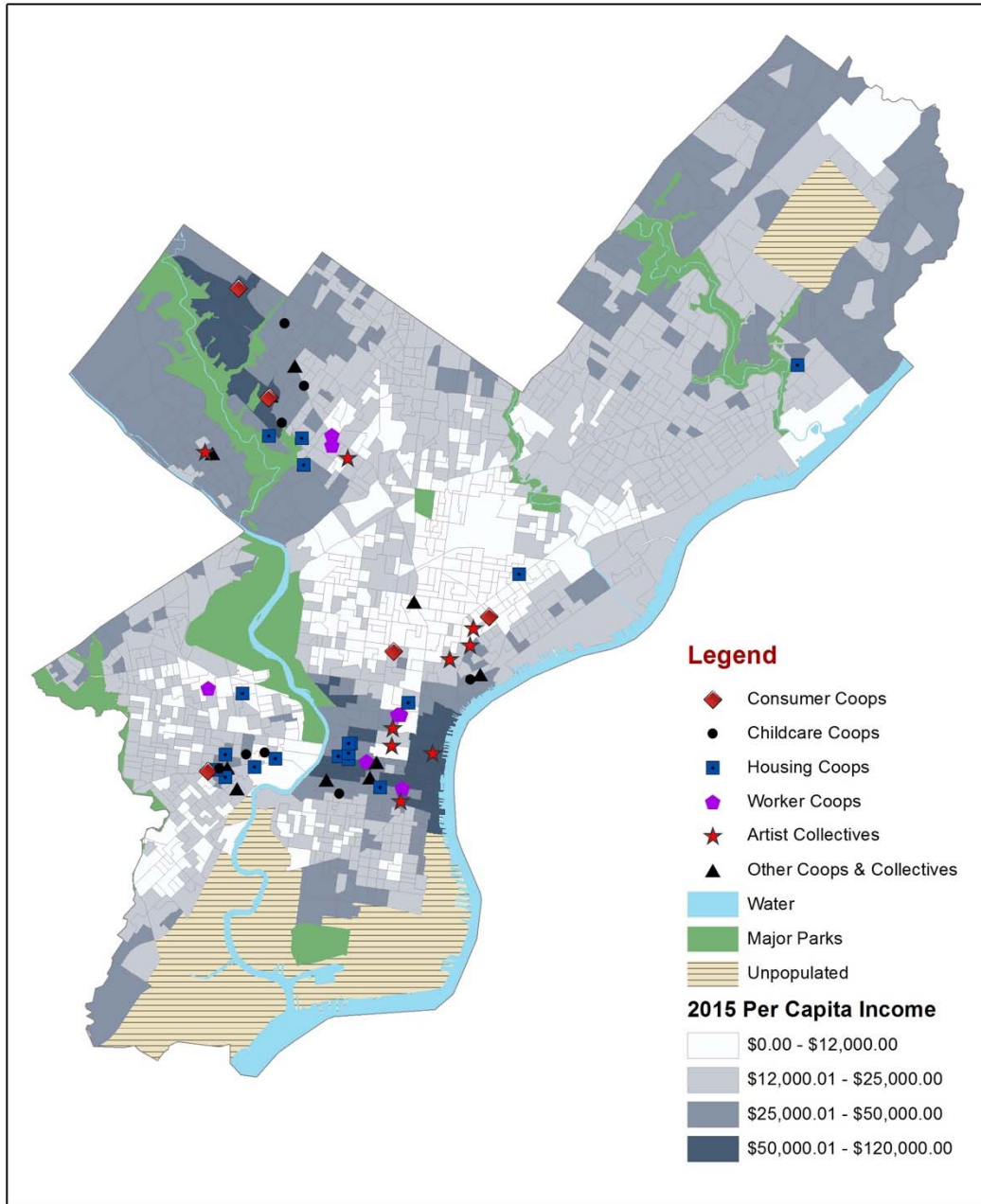
- Average years since established: 61 years ago (3 responses)
- Coop members: 350
- Employees: 66 (31 full-time; 35 part-time)
- Average number of monthly volunteers: 435 (3 responses)
- Employee compensation: \$570,000 (3 responses)
- Annual Revenue: \$920,000 (3 responses)

Consumer Cooperatives (excluding food coops and REI)

In Philadelphia and the three surrounding Pennsylvania counties (Bucks, Montgomery, Delaware), there are two consumer coops. In 2015, we surveyed **one** of these. We found:

- Coop Members: 6200
- Employees: 8 (full-time)
- Employee compensation: \$547,000
- Annual Revenue: \$4.8 million
- Assets: \$1.7 million

Map 1: Coops/Collectives and Per Capita Income (2015) in Philadelphia

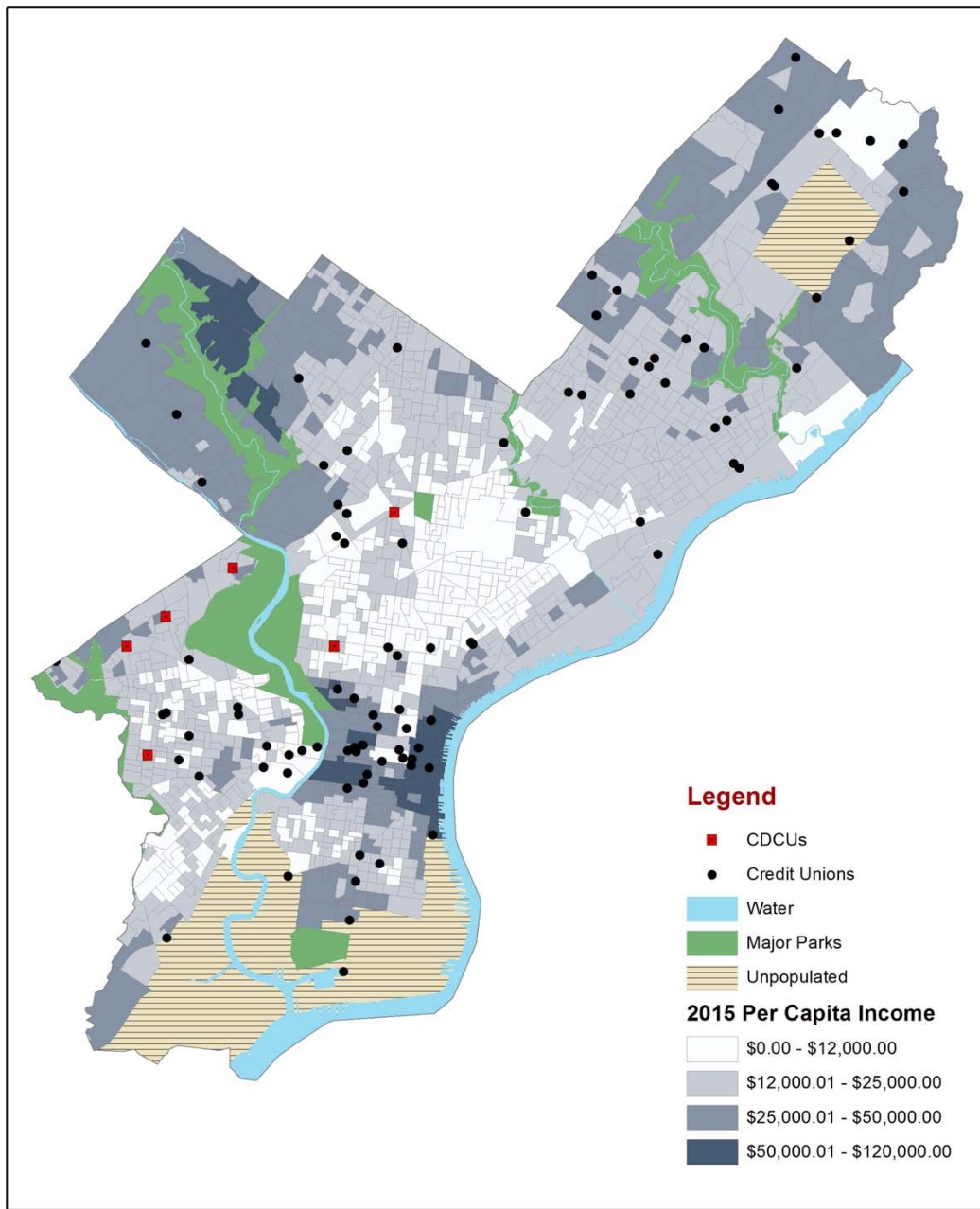


Map by Craig Borowiak (with funding from the National Science Foundation)

Demographic Data: ESRI 2015 Estimates

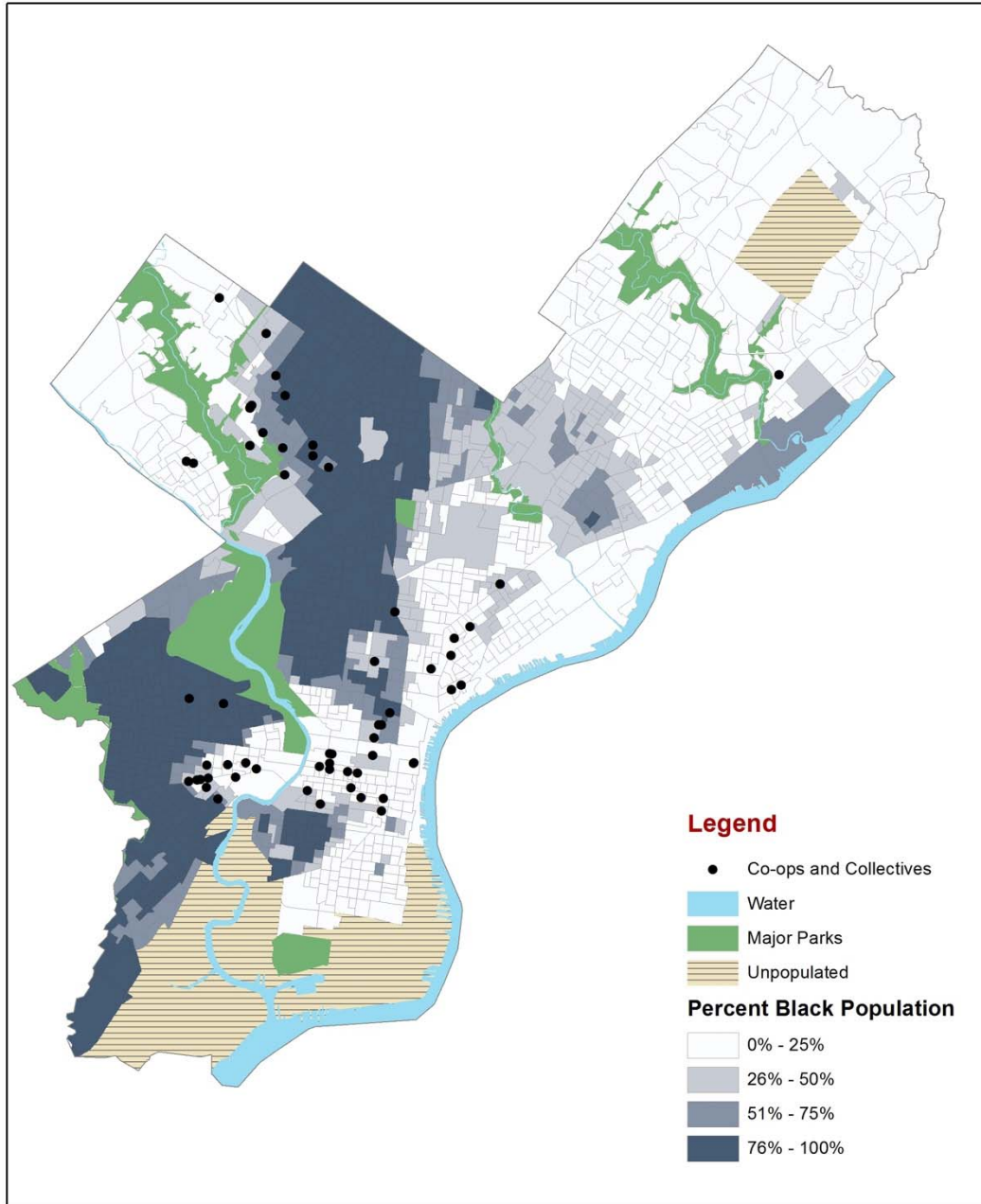
Organization Data: Solidarity Economy Mapping Project

Map 2: Credit Unions and Community Development Credit Unions and Per Capita Income (2015) in Philadelphia



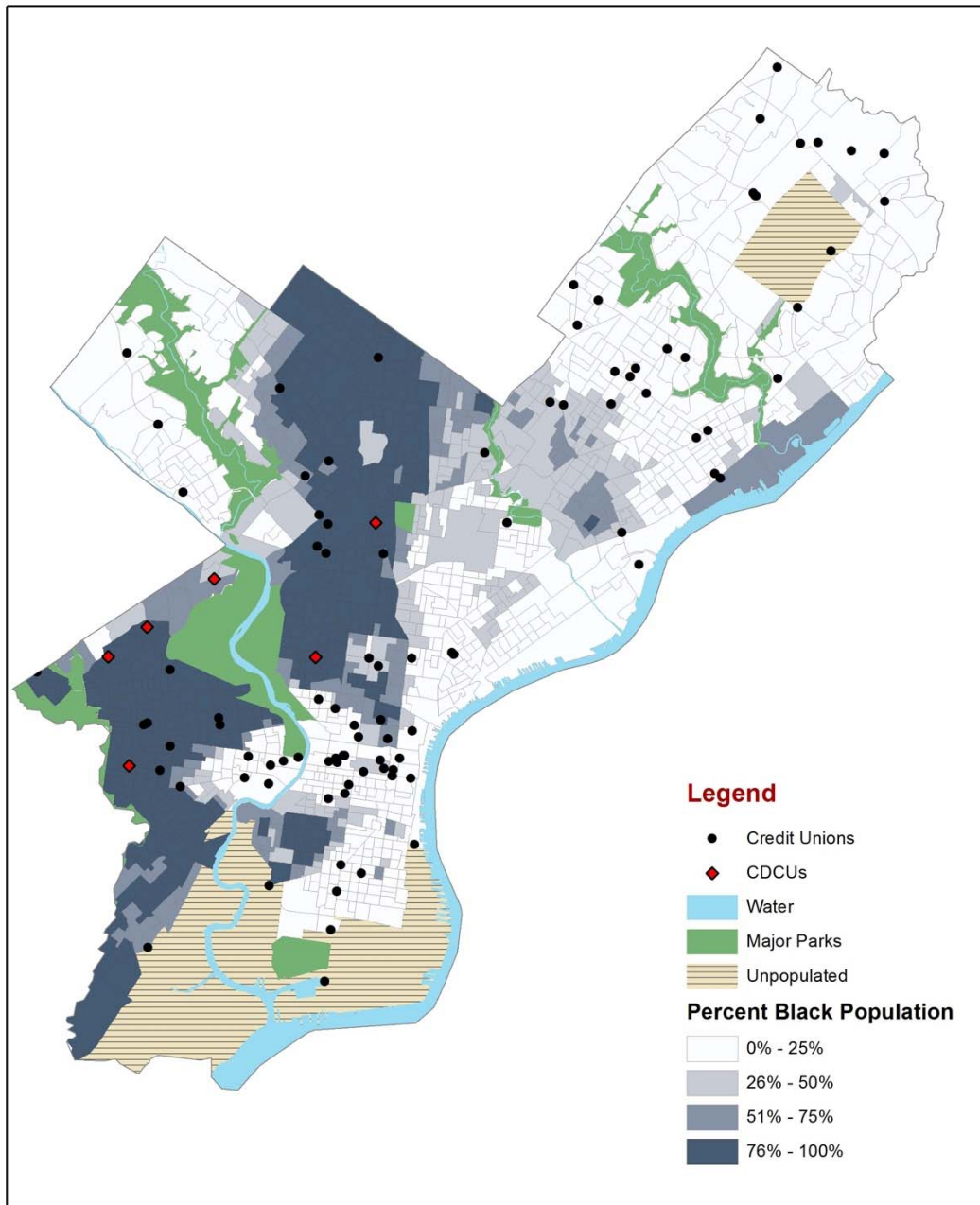
Map by Craig Borowiak (with funding from the National Science Foundation)
Demographic Data: ESRI 2015 Estimates
Organization Data: NCUA and Solidarity Economy Mapping Project

Map 3: Coops/Collectives and Percent Black Population (2015) in Philadelphia



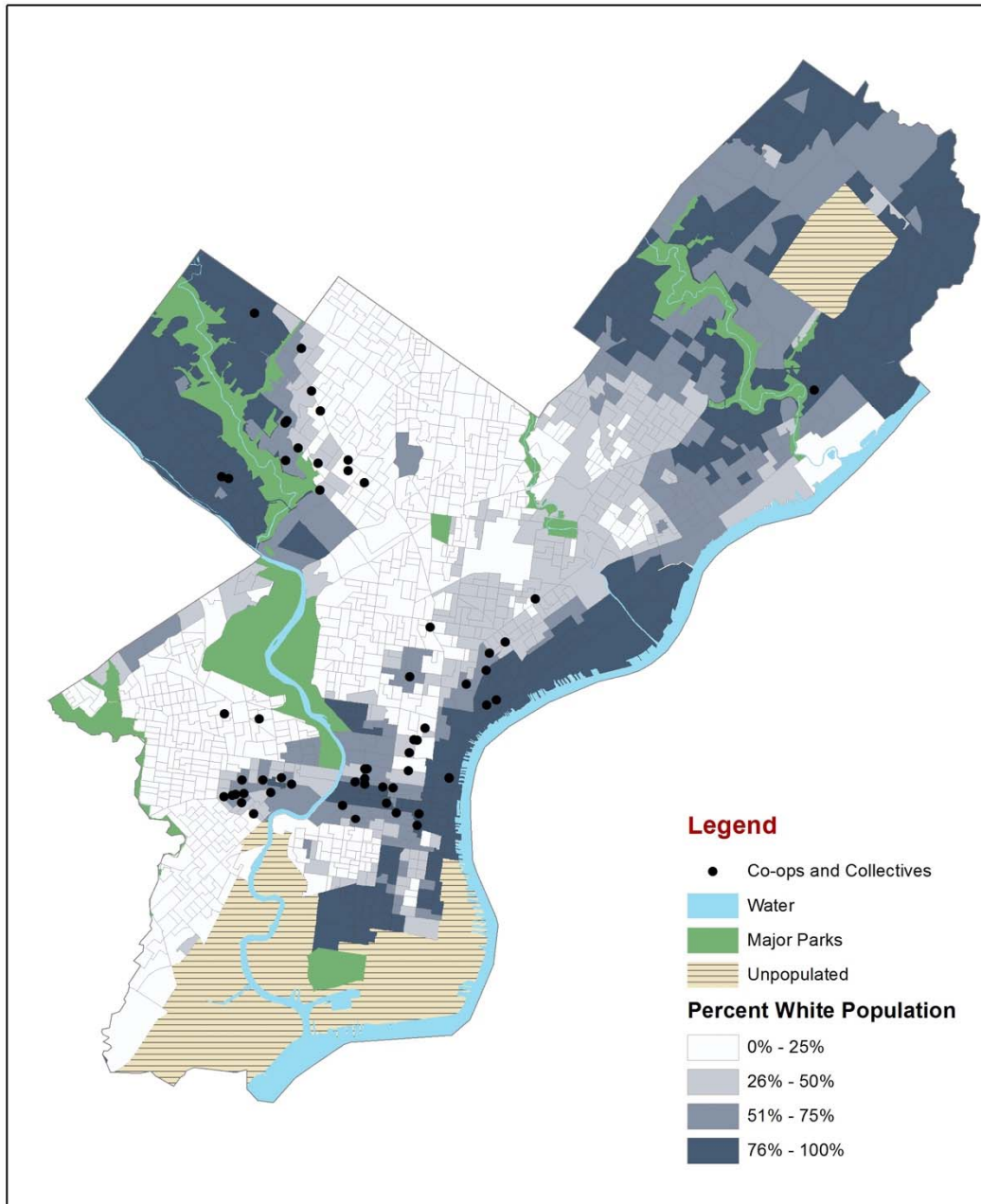
Map by Craig Borowiak (with funding from the National Science Foundation)
Demographic Data: ESRI 2015 Estimates
Organization Data: Solidarity Economy Mapping Project

Map 4: Credit Unions and Community Development Credit Unions and Percent Black Population (2015) in Philadelphia



Map by Craig Borowiak (with funding from the National Science Foundation)
Demographic Data: ESRI 2015 Estimates
Organization Data: NCUA and Solidarity Economy Mapping Project

Map 5: Coops/Collectives and Percent White Population (2015) in Philadelphia

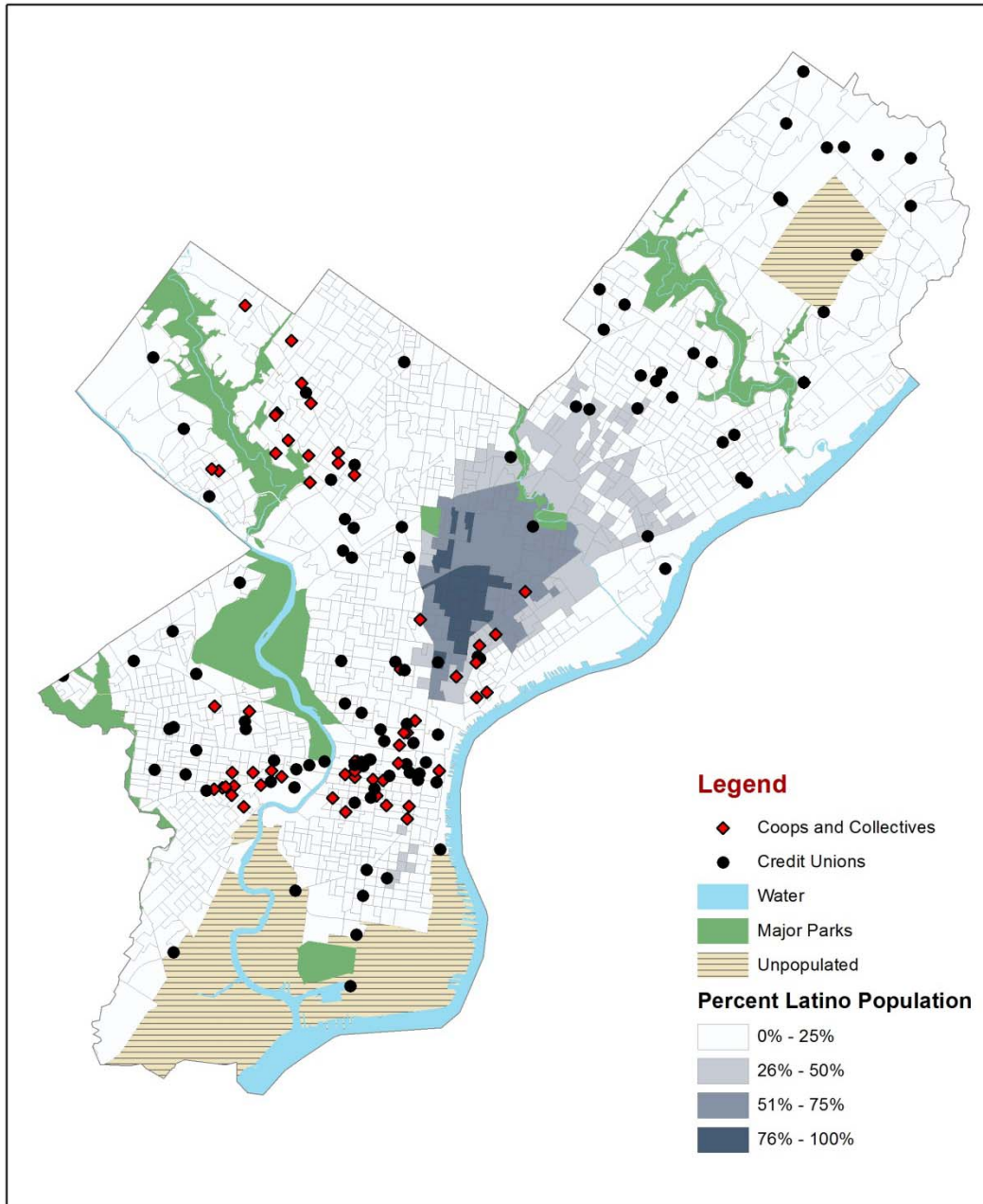


Map by Craig Borowiak (with funding from the National Science Foundation)

Demographic Data: ESRI 2015 Estimates

Organization Data: Solidarity Economy Mapping Project

Map 6: Coops/Collectives and Credit Unions and Percent Latino Population (2015) in Philadelphia



Map by Craig Borowiak (with funding from the National Science Foundation)
Demographic Data: ESRI 2015 Estimates
Organization Data: NCUA and Solidarity Economy Mapping Project